

BTM



*Manufacturer & Distributor of
U-Bolts, Custom Bent Wire Products
and Specialty Threaded Fasteners*

www.btm-mfg.com

Welcome to BTM Manufacturing

BTM Manufacturing has been serving customers throughout North America for over 50 years. As a certified ISO 9001-2008 company, we are continually striving to meet and exceed our customer's expectations. We are in constant pursuit of quality, value and reliability improvements in the products and services that we provide to our customers.

BTM is a leading manufacturer of bent and threaded products. Our capabilities include U-bolts, J-bolts, studs, anchor bolts, eye bolts and bent/threaded product manufactured to custom specifications. Our size range from 3/16" through 4" diameter in a variety of ferrous and non-ferrous materials, coupled with our extensive array of production equipment, give us manufacturing capabilities that are unparalleled in our industry. From threading and bending to welding and drilling, BTM has the highly trained and experienced staff to ensure that your product is made to specification and is delivered on time.

HISTORY

BTM has been a leading manufacturer of fastening products since our inception as Belton Tool & Machine in 1961. Through our exceptional service, a commitment to quality and a customer-first atmosphere, we have grown from our first 320 square foot shop to our 100,000+ square foot manufacturing facility located in the industrial park area of the Centerpoint KCS Intermodal Center in Kansas City, Missouri.

WHAT WE DO

BTM manufactures threaded fasteners and bent wire product for our customers throughout North America. Made from coil or bar stock, our high speed automated cutting, thread rolling and bending operations help to maintain high quality standards while keeping our production costs low. With our centralized location in America's Heartland, we are well positioned to respond to quick delivery and transit needs. Our products are proudly made in the USA from domestic steel.

OUR COMMITMENT

With six decades of manufacturing experience in supplying specialty threaded fasteners and bent wire product to industries such as agricultural, automotive, truck-trailer, construction, and concrete, our customers can be assured of high quality parts and on time performance from BTM.



U-BOLTS

Round Bend
Square Bend
Tri & Offset Bend



J-BOLTS

Round Bend
Square Bend
Hook Bend



EYE BOLTS

Open Eye
Closed Eye
Welded Eye



ANCHOR BOLTS

L-Bend
Welded Straight
Heavy Hex Headed



CUSTOM MFG

Virtually any kind of unthreaded or threaded, straight or bent part can be made to your custom specifications



SPADE BOLTS

Any Hole Size
Any Spade Size
Hardware Available



STUDS

Single End
Double End
Fully Threaded



RODS

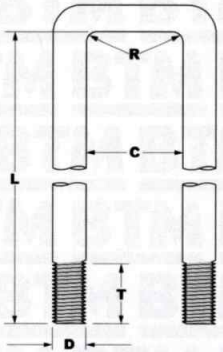
Control Rods
Tie Rods
Latch Rods



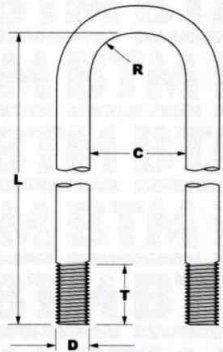
QUALITY CONTROL AND CERTIFICATION

BTM continually strives for quality improvements in our raw material procurement, manufacturing processes and employee training. Streamlining of information systems, along with more effective data storage and accessibility are also areas of constant enhancement. BTM was re-certified to ISO 9001:2008 in January 2016.

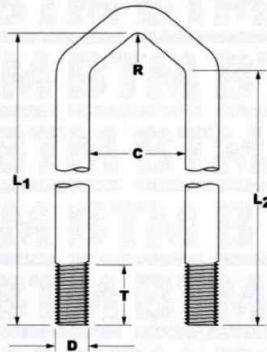
Our Most Popular Shapes



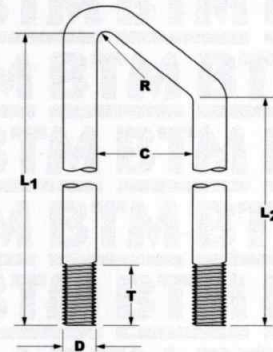
U-BOLT SQUARE BEND



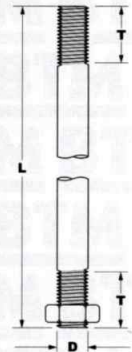
U-BOLT ROUND BEND



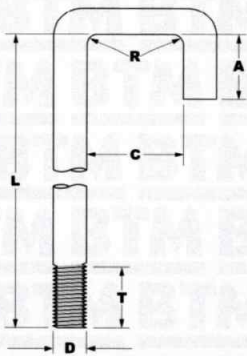
U-BOLT TRI BEND



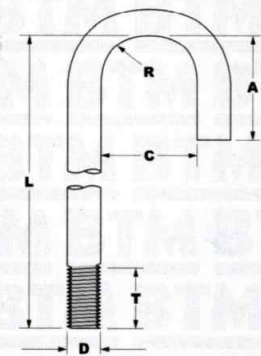
U-BOLT OFFSET BEND



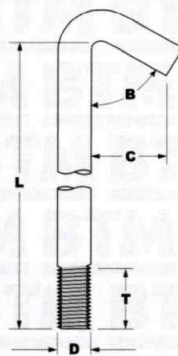
HEADED ANCHOR BOLT



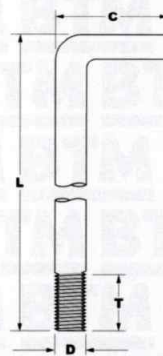
J-BOLT SQUARE BEND



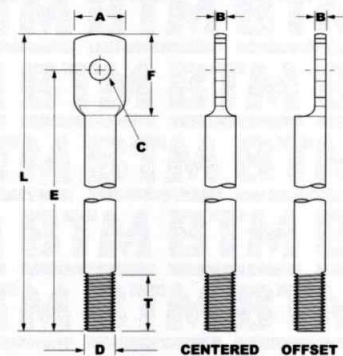
J-BOLT ROUND BEND



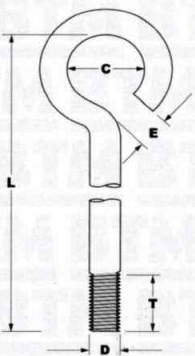
HOOK BOLT



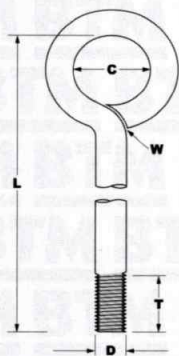
BENT ANCHOR BOLT



SPADE BOLT



EYE BOLT (OPEN)



EYE BOLT (CLOSED)

BTM is your Domestic Manufacturer and Distributor of U-Bolts, Custom Bent Wire Products and Specialty Threaded Fasteners

Manufacturing Capabilities

THREAD SIZE

3/16" to 1-1/2" Rolled Thread
3/16" to 4" Cut Thread
M8 to M20 Rolled Thread
M6 to M30 Cut Thread

THREAD TYPE

Roll Thread
Cut Thread
UNC and UNF
Metric

FINISHES

Zinc
Zinc/Yellow
Black E-coat
Black Oxide
Galvanized
RoHS Compliant
Other Finishes Available

MATERIALS

1018 Steel / Grade 2
1541 Steel / Grade 5
4140 Steel
304 Stainless
316 Stainless
F-1554 Gr-55
A193 B7
Other Materials Available

SECONDARY OPS

Assembly
Bending
Cutting
Drilling
Welding
Tapping
Forging
Heat Treating
Packaging



*IF YOU HAVE ANY QUESTIONS
REGARDING OUR CAPABILITIES
CONTACT US FOR MORE
INFORMATION*

STANDARDS

ASTM
SAE
IFI
ISO



BTM Manufacturing
15403 Andrews Road
Kansas City, MO 64147
www.btm-mfg.com

TEL 1-800-369-2658
FAX 816-331-0473
EMAIL sales@btm-mfg.com



BTM

A COMMITMENT TO SERVICE

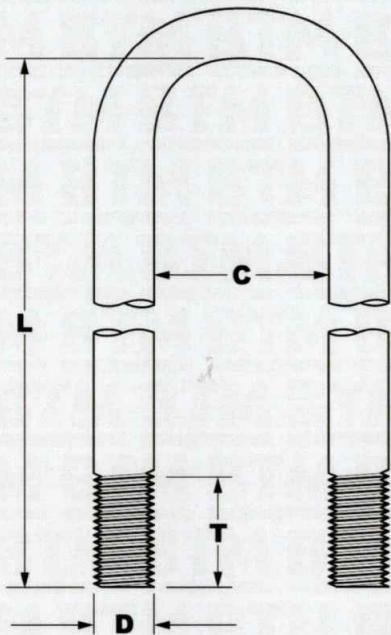


Stock U-Bolt Program



www.btm-mfg.com

Round Bend U-Bolts

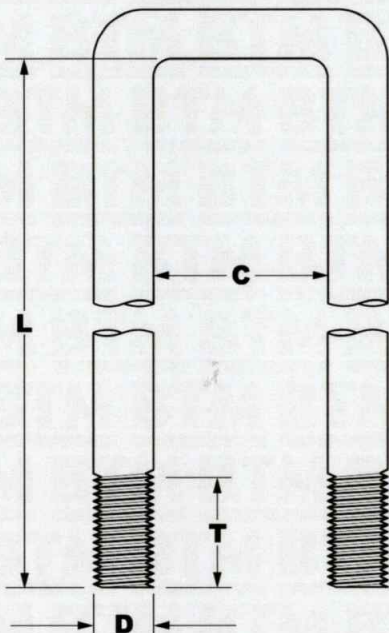


- 1018 Steel
(Grade 2 Equivalent)
- Zinc Plated
- Rolled Thread
- Bulk Packaging
- Nuts and Plates
Not Included

BTM PART #	PIPE SIZE	THREAD "D"	WIDTH "C"	LENGTH "L"	THREAD "T"
B10	1/4"	1/4-20	9/16"	1-1/4"	3/4"
B20	3/8"	1/4-20	3/4"	1-1/4"	5/8"
B30	3/8"	1/4-20	3/4"	2-1/4"	1-1/2"
B40	1/2"	1/4-20	1"	1-3/4"	1"
B40L	1/2"	1/4-20	1"	2-3/4"	1-1/4"
B50	3/4"	1/4-20	1-1/8"	2"	1"
B50L	3/4"	1/4-20	1-1/8"	3-1/8"	1-1/2"
B60	3/4"	1/4-20	1-1/4"	2-1/4"	1-1/4"
B70	1"	1/4-20	1-1/2"	2-3/4"	1-3/8"
B80	1-1/4"	1/4-20	1-3/4"	3"	1-3/8"
B90	1-1/2"	1/4-20	2"	3-1/4"	1-3/8"
B100	1/2"	5/16-18	1"	2-3/16"	1-3/8"
B101	3/4"	5/16-18	1-1/8"	2-3/16"	1"
B110	1"	5/16-18	1-3/8"	2-3/16"	1"
B110L	1"	5/16-18	1-3/8"	3-5/8"	2"
B120	1"	5/16-18	1-1/2"	2-3/16"	1"
B130	1-1/4"	5/16-18	1-3/4"	2-11/16"	1-1/8"
B130L	1-1/4"	5/16-18	1-3/4"	4-1/2"	2"
B140	1-1/2"	5/16-18	2"	2-11/16"	1"
B140L	1-1/2"	5/16-18	2"	4-3/4"	3"
B150	2"	5/16-18	2-1/2"	3-3/16"	1"
B150L	2"	5/16-18	2-1/2"	5-5/8"	3"
B160	2-1/2"	5/16-18	3"	3-11/16"	1"
B170	1/2"	3/8-16	1"	2-1/4"	1-1/4"
B180	3/4"	3/8-16	1-1/4"	2-1/4"	1-1/4"
B190	1"	3/8-16	1-1/2"	2-1/2"	1-1/4"
B200	1-1/4"	3/8-16	1-3/4"	2-3/4"	1-1/8"
B210	1-1/2"	3/8-16	2"	2-5/8"	1-1/4"
B220	2"	3/8-16	2-1/2"	3-1/8"	1-1/4"
B230	2-1/2"	3/8-16	3"	3-5/8"	1-1/4"
B230L	2-1/2"	3/8-16	3"	6-5/8"	3"
B240	3"	3/8-16	3-1/2"	4-1/8"	1-1/4"
B250	2-1/2"	3/8-16	3"	4-1/2"	1-5/8"
B260	3"	1/2-13	3-1/2"	5"	1-1/2"
B260L	3"	1/2-13	3-1/2"	8-1/2"	3"
B270	3-1/2"	1/2-13	4"	5-1/2"	1-1/2"
B280	4"	1/2-13	4-1/2"	6"	1-1/2"
B290	5"	1/2-13	5-5/8"	7-1/4"	2"
B300	6"	1/2-13	6-3/4"	8-3/8"	2"
B310	8"	1/2-13	8-3/4"	10-3/8"	2"



Square Bend U-Bolts



- 1541 Steel
(Grade 5 Equivalent)
- Zinc Plated
- Rolled Thread
- Bulk Packaging
- Nuts and Plates
Not Included

Applications available for the Farming and Agricultural industries

BTM PART #	FITS TUBING	THREAD "D"	WIDTH "C"	LENGTH "L"	THREAD "T"	LBS/EACH
SUB5	2" x 2"	1/2-13	2"	3-1/2"	1-1/2"	0.412
SUB10	2-1/2" x 2-1/2"	3/8-16	2-1/2"	4"	1-1/2"	0.261
SUB15	2-1/2" x 2-1/2"	1/2-13	2-1/2"	4"	1-1/2"	0.478
SUB20	3" x 3"	5/8-11	3"	4-1/2"	1-1/2"	0.874
SUB25	3" x 4"	5/8-11	3"	5-1/2"	1-1/2"	1.015
SUB30	4" x 4"	5/8-11	4"	5-1/2"	1-1/2"	1.080
SUB35	4" x 4"	3/4-10	4"	5-1/2"	1-1/2"	1.600
SUB40	5" x 5"	5/8-11	5"	6-1/2"	1-1/2"	1.150
SUB45	5" x 5"	3/4-10	5"	6-1/2"	1-1/2"	1.910
SUB50	5" x 7"	5/8-11	5"	8-1/2"	1-1/2"	1.570
SUB55	5" x 7"	3/4-10	5"	8-1/2"	1-1/2"	2.322
SUB60	6" x 4"	5/8-11	6"	5-1/2"	1-1/2"	1.225
SUB65	6" x 4"	3/4-10	6"	5-1/2"	1-1/2"	1.910
SUB70	6" x 6"	3/4-10	6"	7-1/2"	1-1/2"	2.220
SUB75	7" x 5"	5/8-11	7"	6-1/2"	1-1/2"	1.431
SUB80	7" x 5"	3/4-10	7"	6-1/2"	1-1/2"	2.110
SUB85	7" x 7"	1/2-13	7"	8-1/2"	1-1/2"	1.080
SUB90	7" x 7"	5/8-11	7"	8-1/2"	1-1/2"	1.720
SUB95	7" x 7"	3/4-10	7"	8-1/2"	1-1/2"	2.528

ORDERING NOTES FOR U-BOLTS

- [1] Width tolerance will be +/- 1/8" max
- [2] Minimum threads lengths are shown. "T" may be longer at manufacturers option
- [3] \$50.00 minimum invoice amount per order for both Round and Square U-Bolts

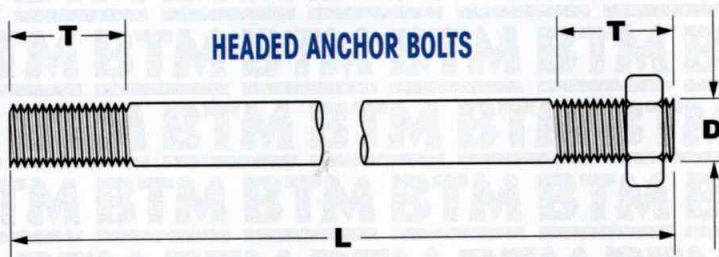
BTM is your Domestic Manufacturer and Distributor of U-Bolts, Custom Bent Wire Products and Specialty Threaded Fasteners

For more information visit us online at www.btm-mfg.com



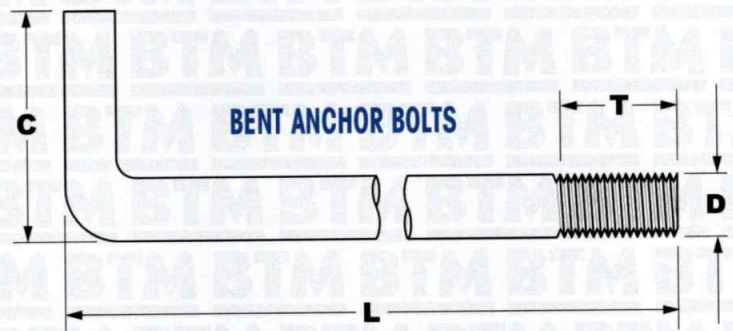
Anchor Bolt Products

BTM is your Domestic Manufacturer and Distributor of a full range of Headed, Bent and Concrete Anchors



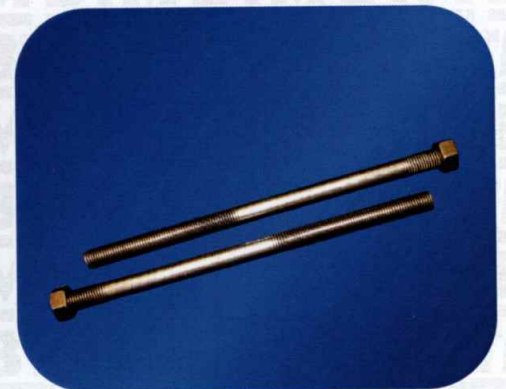
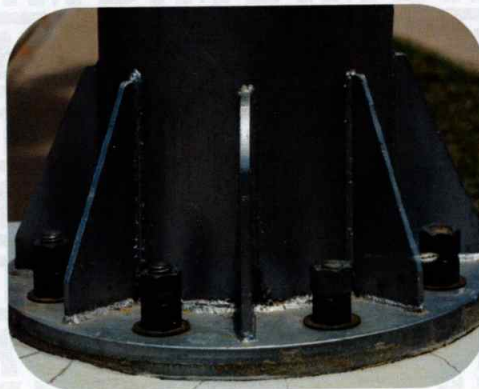
COMMERCIAL ANCHORS

AISI 1018 Carbon Steel
 ASTM F1554 Grades 36, 55 and 105
 ASTM A193 Grade B8 (304) and B8M (316) Class 1
 ASTM A193 B7

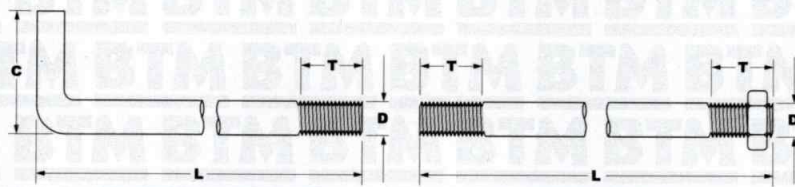


NUT & WASHER

SAE Grade 2 Finished Hex Nuts
 ASTM A194 Grade 2H Heavy Hex Nuts
 ASTM A194 Grade 8 (304) and 8M (316)
 USS, SAE & F436 Flat Washers



Anchor Bolt Specifications



BENT ANCHOR BOLT

HEADED ANCHOR BOLT

1/2" DIAMETER ANCHOR BOLT WITH
2" MIN. THREAD AND 1-1/2" MIN. LEG

SIZE	BENT	HEADED
1/2 x 6	●●	○
1/2 x 8	●●	○
1/2 x 10	●●	○
1/2 x 12	●●	○
1/2 x 15	●○	○
1/2 x 18	●●	○
1/2 x 21	●○	○

1" DIAMETER ANCHOR BOLT WITH
4" MIN. THREAD AND 3" MIN. LEG

SIZE	BENT	HEADED
1 x 10	○	●
1 x 12	●	●
1 x 15	●	●
1 x 18	●	●
1 x 21	●	●
1 x 24	●	●
1 x 30	●	○
1 x 36	●	○

5/8" DIAMETER ANCHOR BOLT WITH
3" MIN. THREAD AND 3" MIN. LEG

SIZE	BENT	HEADED
5/8 x 10	●●	○
5/8 x 12	●●	○
5/8 x 15	●○	○
5/8 x 18	●●	○
5/8 x 21	●○	○

1-1/4" DIAMETER ANCHOR BOLT WITH
4" MIN. THREAD AND 4" MIN. LEG

SIZE	BENT	HEADED
1-1/4 x 15	●	●
1-1/4 x 18	●	●
1-1/4 x 21	●	●
1-1/4 x 24	●	●
1-1/4 x 28	●	○
1-1/4 x 30	●	○
1-1/4 x 36	●	○

3/4" DIAMETER ANCHOR BOLT WITH
4" MIN. THREAD AND 3" MIN. LEG

SIZE	BENT	HEADED
3/4 x 10	●○	●○
3/4 x 12	●●	●○
3/4 x 15	●●	●●
3/4 x 18	●●	●●
3/4 x 21	●●	●●
3/4 x 24	●●	●○

NOTES

- PLAIN FINISH
- HOT DIPPED GALVANIZED
- AVAILABLE UPON REQUEST

Contact us for custom diameters, dimensions, materials, finishes and nut/washer combinations

Standard Concrete Anchors

We stock a range of concrete anchors to suit all needs and environments - please contact us for more information on these products.

TAPPER®



WEDGE-BOLT®



POWER-STUD™



LOK-BOLT™



STEEL DROPIN™



Rev. 03/01/17



15403 Andrews Road, Kansas City, Missouri 64147
TEL 1-800-369-2658 FAX 816-331-0473 EMAIL sales@btm-mfg.com

www.btm-mfg.com